

Euro Hexsert® / Hexsert®

Overview

Steel inserts with hexagonal body, providing high torque-to-turn and pull-out performance, particularly in soft metals.

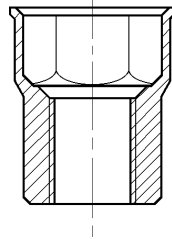


Key features and benefits

- Hexagonal section and bore improves torque-to-turn by up to 200% in sheet metal compared to round body inserts
- Superior pull-out performance
- Can be used for very thin sheet materials from 0.50mm (0.02")
- Double diameter body and lead-in chamfer provide easy insertion into hole
- Access needed from only one side of the application, for high speed assembly
- Provide a female thread in application
- Can be installed in pre-coated or post painted applications without damaging the surface
- Clamp two or more sheets
- Various platings available to increase corrosion resistance
- Low profile head allows near flush fit to application and clamps two or more sheets of material together, within the grip range
- Large flange head provides a load bearing surface and reinforces the hole to prevent push-out. Can be used as a spacer and can be supplied with an underhead seal.
- Closed end prevents the ingress of dirt and fluids into thread and electrical circuits
- High strength option available for use with metric bolts and screws up to Property Class 12.9
- Can be used with hand tools, pneumatic tools and fully automated machines to suit a wide range of assembly methods

Assembly applications

- Automotive chassis components
- Electrical engineering
- Sheet metal
- Domestic appliances
- Switchgear cabinets
- Thermal applications



Specifications

Thread Sizes: M3-M12

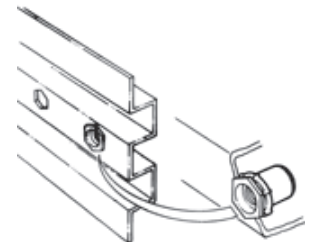
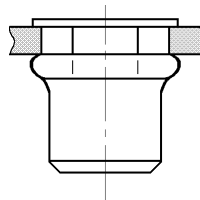
Material: Steel

Finishes: Zinc plated and yellow passivated

Headforms: Low profile and large flange

Option: Closed end

Hole Size: Metric and imperial options



An Acument™ Global Technologies Company

Avdel® and Hexsert® are trademarks of Avdel UK Ltd.
© 2007 Acument Intellectual Properties, LLC

www.avdel-global.com